

Mustertest Hörfähigkeit

Zur Eignungsprüfung für die Studiengänge

- B.Edu. Lehramt Musik an Gymnasien und Gesamtschulen
- B.M. Orchestermusik
- B.M. Freischaffender Musiker
- B.M. Instrumentalpädagogik
- B.M. Oper/Konzert (nicht Aufgabe Nr. 5)
- B.M. Gesangspädagogik (nicht Aufgabe Nr. 5)
- B.M. Elementare Musikpädagogik

1. Bestimmung von Taktarten: a) b) c) d)**2. Wiedererkennen einer Melodie:**

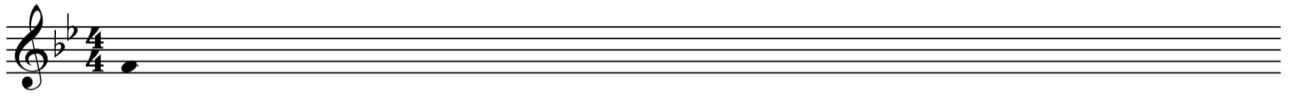
a) J. S. Bach: WTK II, Fuge B-Dur



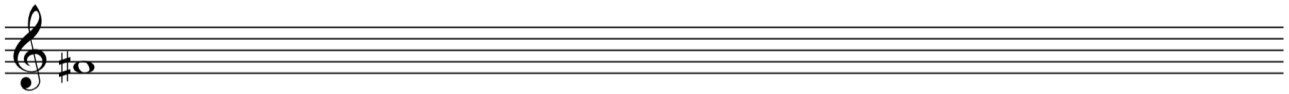
b) Franz Schubert: Sinfonie h-Moll, 2. Satz



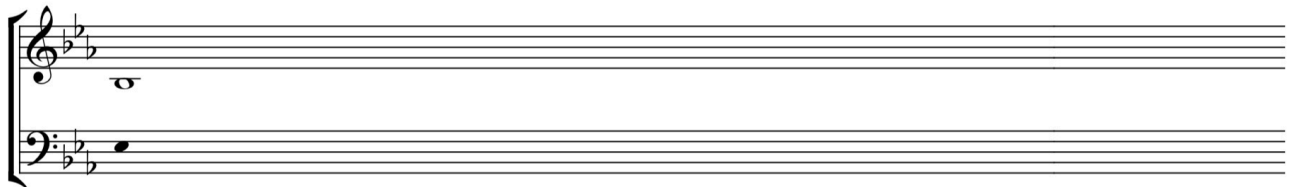
3. Rhythmisierung einer Tonreihe



4. Intervallreihe



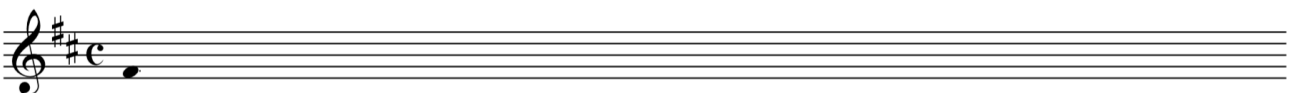
5. Zweistimmiger Satz



6. Akkorddiktat



7. Melodische Gedächtnisaufgabe



8. Fehler in einem Rhythmus



9. Fehler in einem polyphonen Satz (J. S. Bach WTK I)



LÖSUNGEN

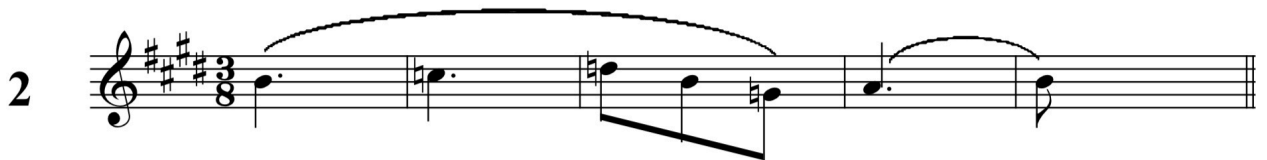
1. Bestimmung von Taktarten: a) b) c) d)

2. Wiedererkennen einer Melodie:

a) J. S. Bach: WTK II, Fuge B-Dur



b) Franz Schubert: Sinfonie h-Moll, 2. Satz



LÖSUNGEN

3. Rhythmisierung einer Tonreihe



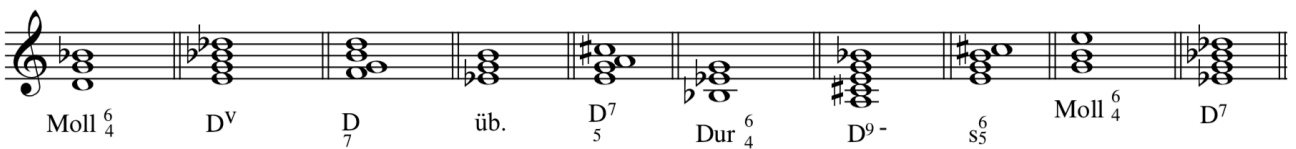
4. Intervallreihe



5. Zweistimmiger Satz



6. Akkorddiktat



7. Melodische Gedächtnisaufgabe



LÖSUNGEN

8. Fehler in einem Rhythmus

The image shows a single staff of music in 6/8 time. The first measure contains a triplet of eighth notes. The second measure contains a quarter note followed by two eighth notes. The third measure contains a quarter note followed by a quarter rest. The fourth measure contains a quarter note followed by a quarter rest. The fifth measure contains a quarter note followed by two eighth notes. The sixth measure contains a quarter note followed by two eighth notes. Below the staff, two eighth notes are shown with a fermata above them, indicating a rhythmic error in the original notation.

9. Fehler in einem polyphonen Satz (J. S. Bach WTK I)

The image shows two systems of musical notation for a polyphonic setting in G major, C major, and G major. The first system consists of a treble and bass staff. The treble staff has a melodic line with a fermata over a half note. The bass staff has a bass line with a fermata over a half note. The second system consists of a treble and bass staff. The treble staff has a melodic line with a fermata over a half note. The bass staff has a bass line with a fermata over a half note. The notation includes dynamic markings such as *g* and *cis*.